



Next Generation Product Lifecycle Management

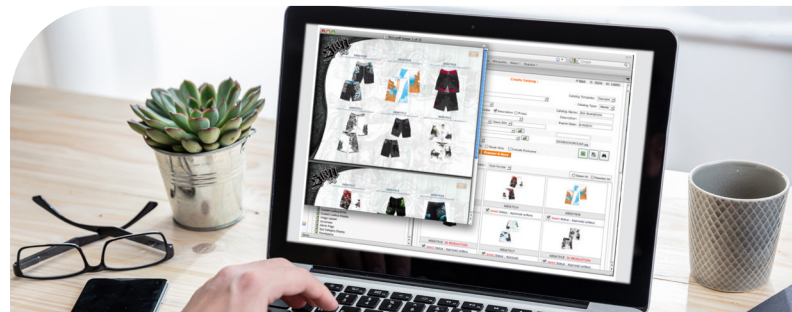


Thanks to our **powerful template** based workflow engine, Sample logs, Licensing Approval and Lab dip spreadsheets are all obsolete.

Our modular framework includes powerful workflow features. The powerful line sheet/catalog module enables salespeople to generate their own line sheets on the fly in minutes, and integrates seamlessly with our other modules to eliminate duplicate entries and wasted time uploading and re-uploading images. Uploads seamlessly from within Illustrator and our Graphics Engine converts Illustrator files to JPEG and PNG, which offloads the tedious work of creating JPEGs and keeps your designers designing.

User Friendly Pricing, Quotation Management, and Sample Tracking

- ✔ Reduced Product Development Costs
- ✔ Accelerated Time to Market
- ✔ Revision Management
- ✔ Electronically send Tech Packs Overseas
- ✔ Effortlessly create Catalogs and Line Sheets



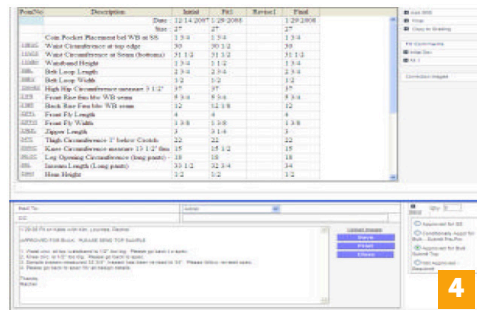
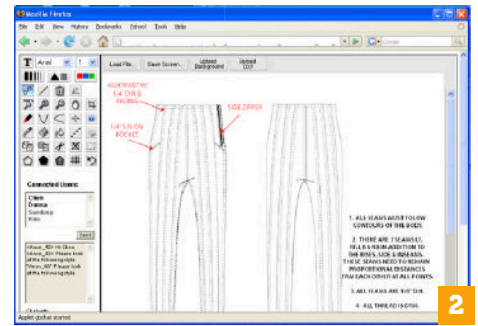
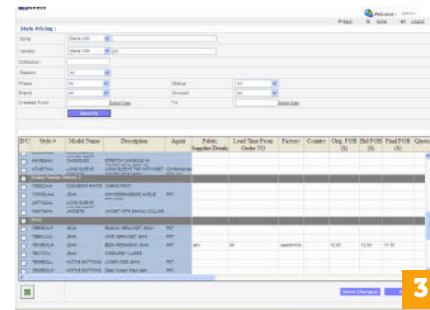
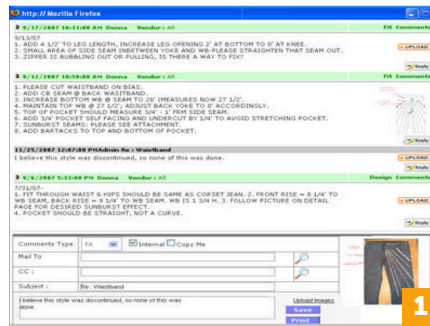
- ✔ Manage Critical Deadlines with email alerts
 - ✔ Collaborate with Colleagues and Suppliers in real time
 - ✔ Style Comments and History Blogs
 - ✔ Flexibility to fit your process today
- Scalable as your business grows

Connecting People with Process



Contact Info

Email: info@amterp.com
 Phone: 1-609-759-2980
 Web: www.amterp.com



1 WhiteBoard: Create Call-outs and share your screen with vendors in real Time

2 Style blogging with email integration and automatic change notification

3 User Friendly Pricing, Quotation Management, and Sample Tracking

4 Powerful Auto-Grading and Fitting Features